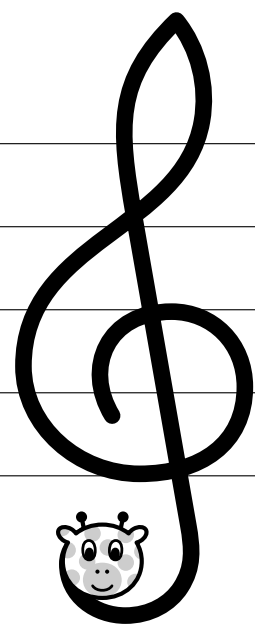
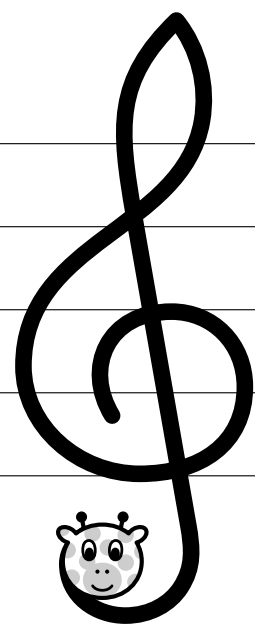


Lille Peter Edderkop

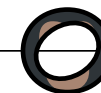
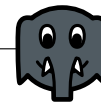
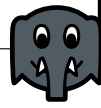
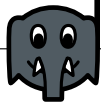
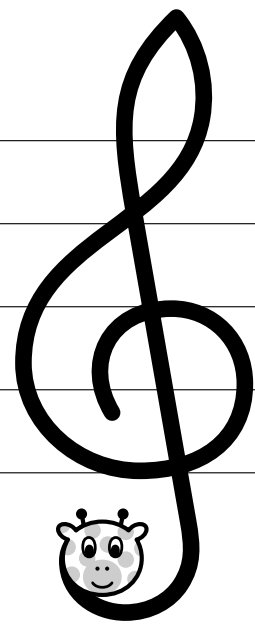
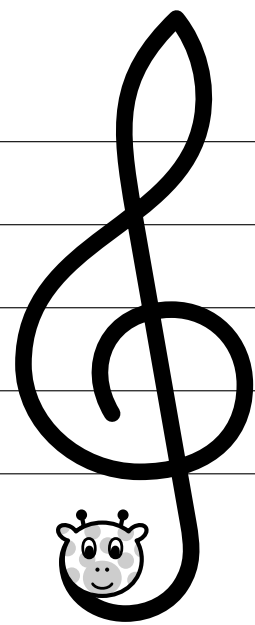
Arr.: Andreas Larsen

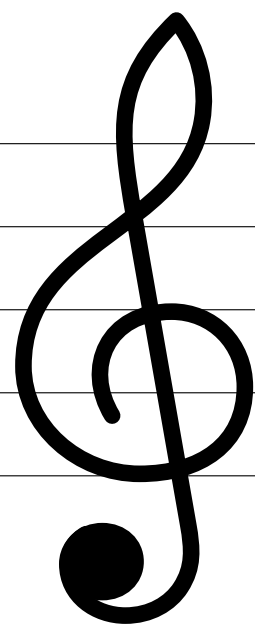


Musical notation on a five-line staff. The first measure contains a whole note with a monkey icon. The second measure contains a whole note with a green dinosaur icon. The third measure contains a whole note with an elephant icon. The fourth measure contains a whole note with an elephant icon. The fifth measure contains a whole note with an elephant icon. The sixth measure contains a whole note with a green dinosaur icon. The seventh measure contains a whole note with a green dinosaur icon. The eighth measure contains a whole note with a green dinosaur icon. The ninth measure contains a whole note with an elephant icon. The tenth measure contains a whole note with a monkey icon. The eleventh measure contains a whole note with a monkey icon.

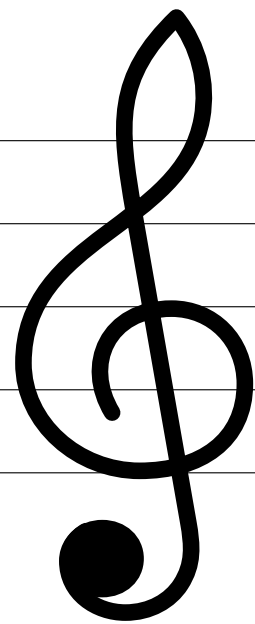


Musical notation on a five-line staff. The first measure contains a whole note with an elephant icon. The second measure contains a whole note with an elephant icon. The third measure contains a whole note with a blue cat icon. The fourth measure contains a whole note with a giraffe icon. The fifth measure contains a whole note with a giraffe icon. The sixth measure contains a whole note with a giraffe icon. The seventh measure contains a whole note with a blue cat icon. The eighth measure contains a whole note with a blue cat icon. The ninth measure contains a whole note with a blue cat icon. The tenth measure contains a whole note with a giraffe icon. The eleventh measure contains a whole note with a blue cat icon.



A musical staff with five horizontal lines. The notes are as follows:

- Measure 1: Four eighth notes on the lines G4, A4, B4, and C5, beamed together.
- Measure 2: Three eighth notes on the lines C5, D5, and E5, beamed together.
- Measure 3: Four eighth notes on the lines F5, G5, A5, and B5, beamed together.
- Measure 4: Two eighth notes on the lines C6 and D6, beamed together, followed by a quarter rest.

A musical staff with five horizontal lines. The notes are as follows:

- Measure 1: A quarter note on the line G4.
- Measure 2: Two eighth notes on the lines A4 and B4, beamed together, followed by a quarter note on the line C5.
- Measure 3: Two eighth notes on the lines D5 and E5, beamed together, followed by a quarter note on the line F5.
- Measure 4: Four eighth notes on the lines G5, A5, B5, and C6, beamed together, followed by a quarter note on the line D6.

